

FireSafe®

DOUBLE E Fire Extinguishers

DE SERIES



EDITION 2020



1 About Us:

Eversafe Extinguisher Sdn. Bhd. incorporated in year 1979, a member of Leeden National Oxygen Ltd, Singapore. Our production of fire-fighting equipment is housed within 2.844 acres of manufacturing and R&D facilities which allows us to offer an extensive range of high-quality products and systems.

2 Vision:

We aim to be the global leader in the production and marketing of firefighting equipment, systems, and solutions, through the use of innovative design.



3 Core Values:



4 Quality Control:

Manufacturing process and quality management systems have been approved to BS EN ISO 9001 by British Standards Institution.

5 Manufacturer/Distributor of:

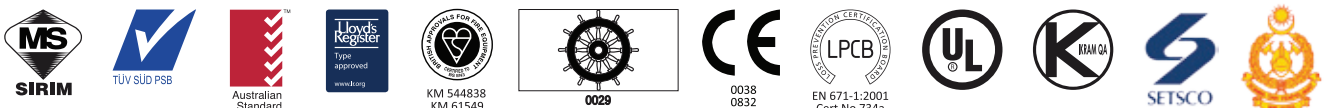
- | | | |
|--|---|--|
| ■ Portable and Mobile Fire Extinguishers | ■ Nozzle | ■ NAF S227 Fire Extinguishing System (FM200 Alternative) |
| ■ Fire Hose Reels | ■ Smoke Alarm | ■ NAF S125 Fire Extinguishing System |
| ■ Landing Valves | ■ Fire Blanket | ■ Inert Gases Fire Extinguishing System |
| ■ Breeching Inlets | ■ Canvas Hose | ■ Kerr Fire Foam Compound |
| ■ Hydrant | ■ Cabinets | ■ Wet Chemical Fire Suppression System |
| | ■ CO ₂ Fire Extinguishing System | |

6 Product Standards/Certification/Directives:

Our products are in compliance with the following product standards / certification bodies:

- | | |
|--|--|
| a) American Standard (UL) | h) Marine Equipment Directive, Wheel mark (Apragaz) |
| b) Australian Standard (SAI Global) | i) Offshore Special Requirement - Sarawak Shell Bhd / Sarawak Shell Petroleum Co (SSB / SSPC) |
| c) European Standard (BSI) | j) Kuwait National Petroleum Co (KNPC) |
| d) Malaysian Standard (SIRIM / IKRAM) | k) Kuwait Oil Company (KOC) |
| e) Singapore Standard (TÜV SÜD PSB / SETSCO) | |
| f) Construction Product Directive, CPD / CPR (BRE) | |
| g) Pressure Equipment Directive, CE mark (Lloyd's Register) | |

PRODUCT APPROVALS



FireSafe® range of Fire Extinguisher is certified to various international standards/directives:

- European Standard – BS EN 3 & BS EN 1866
- Australian Standard – AS/NZS 1841
- Malaysian Standard – MS 1539
- Singapore Standard – SS EN 3
- PED (Pressure Equipment Directive)
- MED (Marine Equipment Directive)

Extinguisher Features






Extinguisher bodies are fully deep drawn from cold rolled steel, and pressure tested to twice the extinguisher's working pressure. Cylinders are externally coated with polyester (with phosphate under treatment) for maximum corrosion resistance.

For extreme environment installations, we recommend the use of our **CR (Corrosion Resistant)** Fire Extinguishers.

Type of Extinguishant:

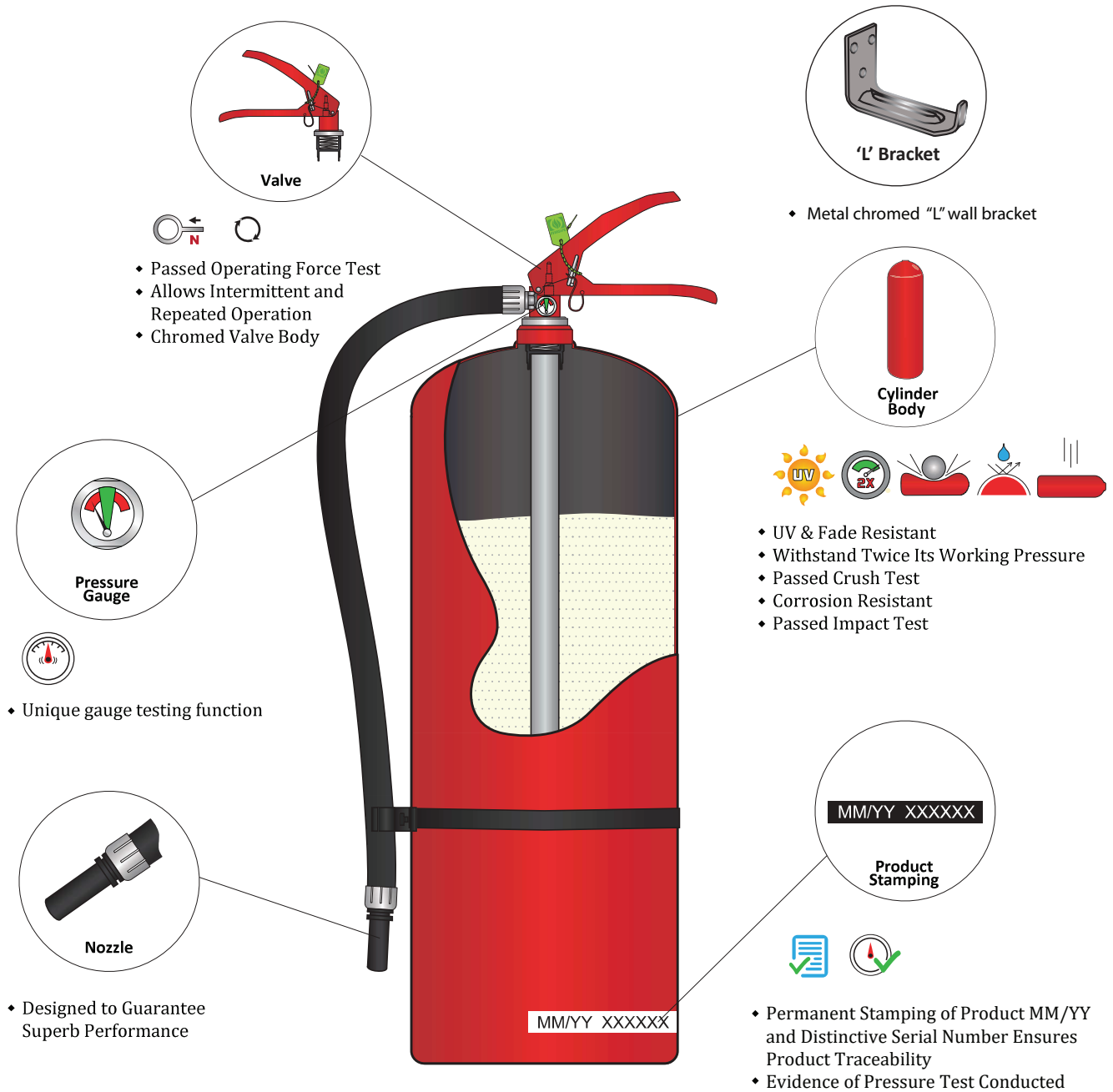
Dry Chemical Powder (ABC)	Dry Chemical Powder (ABC) is a mixture of highly efficient mono-ammonium phosphate and ammonium sulphate ground to selected particle sizes and made resistant to influences of climate extremes by means of hydrophobing agents. It is a versatile and safe extinguishant, and is ideally suited to environment where the fire hazard is mixed. It also offers fast knockdown, protection against reignition and heat reduction. Multipurpose Dry Chemical Powder (ABC) is effective on Class A (carbonaceous) fire, Class B (flammable liquid) fire and Class C (flammable gas) fire. It is also suitable for use on live electrical fires.
Monnex Powder	Monnex powder is based on potassium bicarbonate-urea complex. Monnex is particularly effective against fire involving alcohols, ketones and esters, which are more difficult for conventional fire fighting agents. Monnex Powder is recommended for high risk situation and should be used when rapid knockdown is required on Class B and C fires. Monnex is particularly suitable for use in refineries, petrochemical complexes and other high hazard areas.
Water	Water , the most commonly used fire extinguishant for Class A fire involving carbonaceous materials such as wood, textiles and paper by cooling the fire and removing the heat needed for combustion.
Foam (AFFF)	Filmfoams (AFFF) are synthetic aqueous film forming foam concentrate consisting of fluorocarbon and hydrocarbon surfactants blended with various solvents, preservatives and stabilisers. The foam forms an aqueous film which helps to prevent the release of fuel vapours while the foam blanket from which the film forming liquid drains excludes oxygen from the fuel surface, extinguishing the fire and preventing re-ignition. The water content of the foam provides a cooling effect. The film forming liquid, although heavier, floats on the surface of the fuel, due to its lower surface tension. Effective on B class hydrocarbon fuel fires such as oil, petroleum, aviation fuels, and is particularly suitable where fast fire knockdown is essential. It is compatible with all dry powders. Its excellent wetting characteristics make it useful in combating Class A fire as well.
Carbon Dioxide (CO₂)	Carbon Dioxide is the ideal agent for use on Class B (flammable liquids) fires. It is non toxic, non conductive and non corrosive inert gas which works by smothering the flames and reducing the oxygen content of the air around fire. CO ₂ is safe to use on live electrical fires.
Wet Chemical	Wet Chemical , an aqueous solution, is suitable for use on Class F fire, which involves cooking oils and fats. It reacts with the burning oil or fat forming a 'blanket' which rapidly knocks the flames out, cools the burning oil and chemically reacts to form a soap-free substance, sealing the surface and preventing re-ignition.

SELECTION CHART FOR USE OF FIRE EXTINGUISHERS

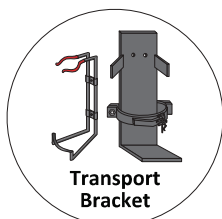
Symbol	Class Of Fire	Descriptions	ABC Powder	BC Powder	Monnex Powder	Water Spray Nozzle	Spray Foam	Foam (Branchpipe)	CO ₂	Wet Chemical
	A	Solid materials	✓			✓	✓	✓		✓
	B	Liquids or liquefiable solids	✓	✓	✓		✓	✓	✓	
	C	Gases	✓	✓	✓					
	E	Electrical Equipment	✓	✓	✓	*	*		✓	
	F	Cooking oil								✓

* Safe if in accidental contact with live electrical equipment. Comply with electrical conductivity test BS EN 3-7, Clause 9 Annex C

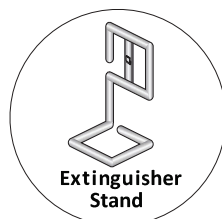
Stored Pressure Type Portable Fire Extinguisher



OPTIONAL ACCESSORIES



Secure Fire Extinguisher Firmly on Vehicles with "Quick Release" Feature (for land usage)



Display Fire Extinguisher Elegantly in Place of the Conventional Wall Bracket Fixation (for land usage)



Protect Fire Extinguisher from Exposure to Extreme Environment eg. Sunlight, Seawater and etc



Record Date/Interval of Servicing Performed on Individual Fire Extinguisher

Stored Pressure Type ABC Dry Powder Portable Fire Extinguishers



FEATURES

- ✓ Fully deep drawn from cold rolled steel
- ✓ Externally coated with polyester powder
- ✓ Pressure tested to twice the extinguisher's working pressure
- ✓ Passed 480 hours salt spray test



EED 1

EED 2

EED 2N

EED 3

EED 4/45/5

EED 6

EED 9

EED 12

Model	EED 1	EED 2	EED 2N	EED 3	EED 4	EED 4S	EED 5	EED 6	EED 9	EED 12
Type	Stored Pressure Type									
Extinguishant	ABC Dry Powder									
Capacity	1 kg	2 kg	2 kg	3 kg	4 kg	4.5 kg	5 kg	6 kg	9 kg	12 kg
Propellant	Nitrogen (N ₂)									
Valve	Controllable Non Ferrous Valve with Pressure Indicator									
Body Diameter	79 mm	110 mm	100 mm	130 mm	158 mm	158 mm	158 mm	158 mm	178 mm	188 mm
Overall Height	325 mm	370 mm	420 mm	425 mm	475 mm	475 mm	475 mm	525 mm	587 mm	695 mm
Approx Full Weight	1.8 kg	3.3 kg	3.4 kg	5.0 kg	6.9 kg	7.4 kg	7.9 kg	9.3 kg	13.1 kg	17.6 kg
Working Temperature Range	-20°C to + 60°C									
Working Pressure	12 bar									
Test Pressure	25 bar									
Burst Pressure	Exceeds 69 bar									
Approx Discharge Range	2m - 3m	2m - 4m	2m - 4m	5m - 6m	5m	5m	5m	6m - 7m	6m - 7.5m	7m
Approx Discharge Time	9 sec	12 sec	12 sec	14 sec	20 sec	20 sec	20 sec	17 sec	20 sec	30 sec
Fire Rating	5A:34B	13A:55B	8A:34B	13A:89B	13A:113B	13A:113B	13A:113B	27A:233B	34A:233B	43A:233B
Fire Class	A, B, C + Electrical									
Internal Coating	Stoving Epoxy Primer									
Paint Finishing	RAL 3000 Flame Red Epoxy Polyester Powder Coating									
Mounting	Plastic Bracket		Wire Bracket		Metal 'L' Wall Bracket					
Designed & Manufactured to	EN 3									

Stored Pressure Type AFF Foam & Water Portable Fire Extinguishers



FEATURES

- ✓ Fully deep drawn from cold rolled steel
- ✓ Externally coated with polyester powder
- ✓ Pressure tested to twice the extinguisher's working pressure
- ✓ Passed 480 hours salt spray test



EEF 2s

EEF 6s

EEF 9s

EEW 6s

EEW 9s

Model	EEF 2s	EEF 6s	EEF 9s	EEW 6s	EEW 9s
Type	Stored Pressure Type				
Extinguishant	AFF Foam (Premix)			Water	
Capacity	2 litres	6 litres	9 litres	6 litres	9 litres
Propellant	Nitrogen (N ₂)				
Valve	Controllable Chrome Plated Brass Valve with Pressure Indicator				
Body Diameter	110 mm	158 mm	178 mm	158 mm	178 mm
Overall Height	398 mm	575 mm	625 mm	575 mm	625 mm
Approx Full Weight	3.7 kg	10.0 kg	13.7 kg	10.0 kg	13.7 kg
Working Temperature Range	+ 5°C to + 60°C				
Working Pressure	12 bar				
Test Pressure	25 bar				
Burst Pressure	Exceeds 69 bar				
Approx Discharge Range	1.5 m	4 m	6 m	4 m	6 m
Approx Discharge Time	15 sec	32 sec	57 sec	41 sec	75 sec
Fire Rating	5A:34B	13A:144B	21A:183B	8A	13A
Fire Class	A, B + Electrical Safety Test*			A + Electrical Safety Test*	
Internal Lining	Thermoplastic Powder Coating (PPA)				
Paint Finishing	RAL 3000 Flame Red Epoxy Polyester Powder Coating				
Mounting	Wire Bracket	Metal 'L' Wall Bracket			
Designed & Manufactured to	EN 3				

* Safe if in accidental contact with live electrical equipment

Stored Pressure Type Carbon Dioxide Portable Fire Extinguishers



FEATURES

✓ Seamless steel cylinder

✓ Externally coated with polyester powder



EEC 2e2

EEC 3

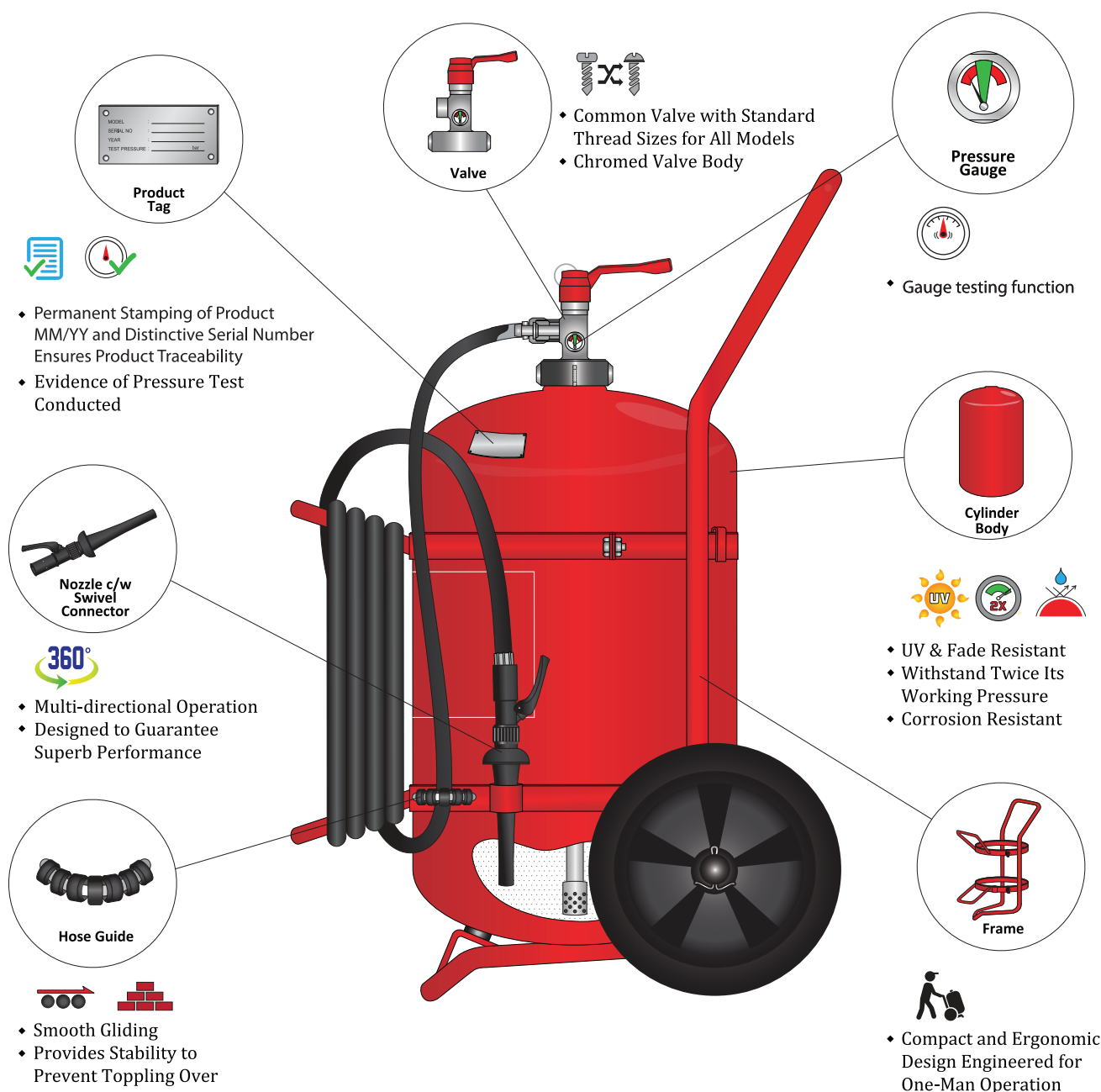
EEC 5e1

ECO-15HH /
EEC 6.8

Model	EEC 2e2	EEC 3	EEC 5e1	ECO-15HH / EEC 6.8
Body Material	Carbon Steel			Cromoly Steel
Extinguishant	Carbon Dioxide (CO ₂)			
Capacity	2 kg	3 kg	5 kg	6.82 kg
Valve	CE Marked Controllable Chrome Plated Brass Valve			
Body Diameter	114 mm	140 mm	152 mm	156 mm
Overall Height*	510 mm	520 mm	670 mm	778 mm
Approx Full Weight	7.6 kg	11.2 kg	17.6 kg	19.4 kg
Working Temperature Range	-20°C to + 60°C			
Working Pressure	56 bar			
Test Pressure	250 bar			
Burst Pressure	180 - 200 bar			
Approx Discharge Range	3 m			
Approx Discharge Time	13 sec	14 sec	23 sec	16 sec
Fire Rating	34B	34B	55B	55B
Fire Class	B + Electrical			
Cylinder Specification	ISO 9809	ISO 9809	BS 5045 Part 7	EN 1964-1
Discharge Assembly	Swivel Horn	Swivel Horn	Hose & Fish Tail Horn	Hose & Circular Horn
Paint Finishing	RAL 3000 Flame Red Epoxy Polyester Powder Coating			
Mounting	Metal 'L' Wall Bracket			
Designed & Manufactured to	EN 3			

* Overall height measure from bottom upto valve handle

Stored Pressure Type Mobile Fire Extinguisher



OPTIONAL ACCESSORIES



Prevent Kinking Around Bent Corners



Steel Rims Available Upon Request (c/w Rod Bearings)



Protect Fire Extinguisher from Exposure to Extreme Environment e.g. Sunlight, Seawater and etc



Record Date/Interval of Servicing Performed on Individual Fire Extinguisher

Stored Pressure Type ABC Dry Powder Mobile Fire Extinguishers



MPM 25

MPM 50

MPM 75

Model	MPM 25	MPM 50	MPM 75
Type	Stored Pressure Type		
Extinguishant	ABC Dry Powder		
Capacity	25 kg	50 kg	75 kg
Propellant	Nitrogen (N ₂)		
Valve / Headcap	Brass Valve with Pressure Gauge		
Discharge Hose	13 mm x 6 m	16 mm x 6 m	19 mm x 6 m
Wheel Diameter	300 mm		
Frame Work	Steel Pipe / Flat Bar		
Cylinder Material	Steel		
Body Diameter	250 mm	386 mm	386 mm
Overall Height	895 mm	975 mm	1090 mm
Overall Width	460 mm	570 mm	570 mm
Overall Depth	550 mm	730 mm	720 mm
Approx Empty Weight	22 kg	39 kg	59 kg
Approx Full Weight	47 kg	89 kg	134 kg
Working Temperature Range	- 20°C to + 60°C		
Working Pressure	12 bar		
Test Pressure	21.5 bar		
Safety Valve Lift Pressure	17 - 21 bar		
Approx Discharge Time	48 sec	61 sec	70 sec
Approx Discharge Range	9 m	10 m	12 m
Fire Rating	A IB C	A IIB C	A IIIB C
Fire Class	A , B, C + Electrical		
Paint Finishing	RAL 3000 Flame Red Epoxy Polyester Powder Coating		
Designed & Manufactured to	EN 1866		

Stored Pressure Type AFF Foam Mobile Fire Extinguishers



MFM 45

MFM 100

MFM 150

Model	MFM 45	MFM 100	MFM 150
Type	Stored Pressure Type		
Extinguishant	AFF Foam (Premix)		
Capacity	45 litres	100 litres	150 litres
Propellant	Nitrogen (N ₂)		
Valve / Headcap	Brass Valve with Pressure Gauge		
Discharge Hose	16 mm x 6 m	19 mm x 6 m	19 mm x 6 m
Wheel Diameter	300 mm	350 mm	350 mm
Frame Work	Steel Pipe / Flat Bar		
Cylinder Material	Steel		
Body Diameter	386 mm	454 mm	454 mm
Overall Height	980 mm	1255 mm	1450 mm
Overall Width	565 mm	685 mm	685 mm
Overall Depth	670 mm	930 mm	930 mm
Approx Empty Weight	46 kg	85 kg	113 kg
Approx Full Weight	91 kg	185 kg	263 kg
Working Temperature Range	+ 5°C to + 60°C		
Working Pressure	12 bar		
Test Pressure	21.5 bar	22.5 bar	22.5 bar
Safety Valve Lift Pressure	17 - 21 bar		
Approx Discharge Time	109 sec	206 sec	300 sec
Approx Discharge Range	10 - 12 m	11 - 13 m	11 - 13 m
Fire Rating	A IIB	A IVB	A IVB
Fire Class	A , B		
Internal Coating	High Build Epoxy Tank Coating		
Paint Finishing	RAL 3000 Flame Red Epoxy Polyester Powder Coating		
Designed & Manufactured to	EN 1866		

Stored Pressure Type Carbon Dioxide Mobile Fire Extinguishers



MCO 10

MCO 10T

MCO 20 / MCO 25

Model	MCO 10	MCO 20	MCO 25	MCO 30	MCO 45	MCO 10T
Capacity	10 kg	20 kg	25 kg	30 kg	45 kg	10 kg x 2
Style	Single					Twin
Extinguishant	Carbon Dioxide (CO ₂)					
Operating Head	Pai-Mark (TPED) Brass Screw Down Valve with Safety Relief Valve					
Cylinder Thread	25E					
Discharge Hose	High Pressure Hose					
Hose Internal Diameter x Length	9.5 mm x 6 m*					
Discharge Horn	Fish Tail Plastic Horn with On / Off Valve					
Cylinder Specification	ISO 9809-1	EN 1964 Part 1 TPED			ISO 9809-1	
- Diameter	156 mm	229 mm	229 mm	267 mm	267 mm	156 mm
- Nominal Height	990 mm	1210 mm	1210 mm	1500 mm	1500 mm	990 mm
Frame Work	Steel pipe / Flat Bar					
Overall Height	1065 mm	1210 mm	1210 mm	1420 mm	1420 mm	1040 mm
Overall Width	465 mm	565 mm	565 mm	610 mm	610 mm	515 mm
Overall Depth	860 mm	1260 mm	1260 mm	1320 mm	1320 mm	1050 mm
Approx Empty Weight	33 kg	80 kg	80 kg	101 kg	101 kg	50 kg
Approx Full Weight	43 kg	100 kg	105 kg	131 kg	146 kg	70 kg
Cylinder / Frame Finish	RAL 3000 Flame Red Epoxy Polyester Powder Coating					
Wheel Diameter	300 mm					
Working Temperature Range	- 20°C to + 60°C					
Working Pressure	56 bar					
Cylinder Test Pressure	250 bar					
Approx Discharge Time	53 sec	61 sec	65 sec	69 sec	77 sec	83 sec
Approx Discharge Range	4 m	4 m	5 m	4 m	4 m	4 m
Fire Rating	70B	89B	89B	113B	183B	89B
Fire Class	B + Electrical					
Designed & Manufactured to	EN 1866					

* 30 meter hose length available on request

Stored Pressure Type and Foam Equipment (Concentrate) Automatic Dry Powder Fire Extinguishers and Mobile Foam Unit



Features

- ✓ Effective on all type of fires - Class A, B, C & Electrical
- ✓ Non-electricity conductive
- ✓ Ideal for unmaned area
- ✓ Wide effective coverage and rechargeable

Model	AUTO P 4.5	AUTO P 6	AUTO P 9
Type	Stored Pressure Type		
Extinguishant	ABC Dry Powder		
Capacity	4.5 kg	6 kg	9 kg
Propellant	Dry Nitrogen (N ₂)		
Activation Temperature	+ 68°C		
Body Diameter	249 mm		
Overall Height	415 mm		
Approx Full Weight	8.1 kg	9.6 kg	12.6 kg
Working Temperature Range	- 20°C to + 60°C		
Working Pressure	12 bar		
Test Pressure	25 bar		
Burst Pressure	Exceeds 69 bar		
Maximum Coverage Volume	9 m ³	12 m ³	19 m ³
Approx Discharge Time	6 sec	8 sec	10 sec
Internal Coating	Stoving Epoxy Primer		
Paint Finishing	RAL 3000 Flame Red Epoxy Polyester Powder Coating		
Mounting	Metal Ceiling Bracket		
Designed & Manufactured to	Factory Manufacturing Standard		

Mobile Foam Unit



MFU 120

Features

- ✓ One-Man Operation
- ✓ Rec rechargeable During Use
- ✓ Continuous Operation
- ✓ Large Wheel Size
- ✓ Light Weight
- ✓ Adjustable Foam Ratio
- ✓ Impact Protection

Model	MFU 120
Capacity	120 Litre
Working Pressure	7 Bar
Min. Discharge Time	9 min. @ 7 Bar
Flow Rate	210 litre/min @ 7 bar
Discharge Range	18 m @ 7 bar
Water Supply Hose	65mm X 15m Canvas Hose
Foam Discharge Hose	38mm X 15m Canvas Hose
Full Weight	185 kg
Overall Height	1070 mm
Overall Width	750 mm
Overall Length	1250 mm
Tank Material	Fibre Glass
Trolley Material	*Mild Steel
Applicable for	**AFF Foam
Wheel Diameter	16"
Filling Opening	200mm

* Marine Finishing available upon request

** Other Types of Foam Concentrate available upon request. Foam sold separately

Accessories

Extendable Telescopic Lance Applicator & Refills

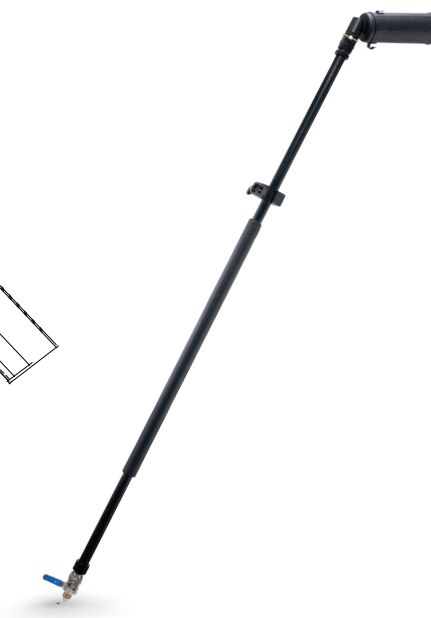
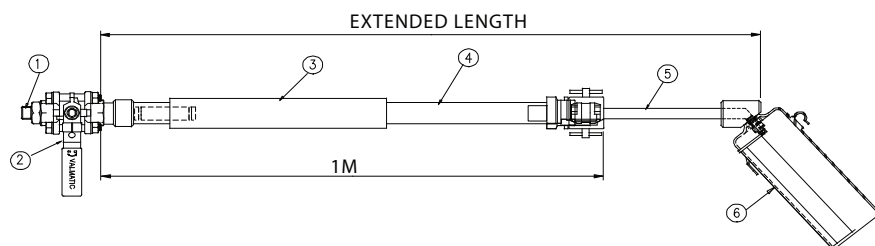


Extendable Telescopic Lance Applicator

Specifications	
Closed Length	2.0 m
Extended Length	3.5 m
Working Temperature Range	- 20°C to 60°C

FEATURES

- ✓ Easy to use
- ✓ Unique discharge nozzle design
- ✓ Weather resistant
- ✓ 3.5m extended range



Item	Description	Material / Specification
1	Connector	Brass
2	Ball Valve	SS316
3	Insulation Hand Grip	Sponge (Rubber)
4	Outer Pipe	Aluminium (Anodized)
5	Inner Pipe	Aluminium (Anodized)
6	Circular Horn	PPAV 161



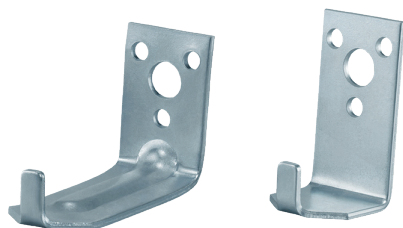
Dry Powder

EP4X-F	
Packaging	25kg
Storage	Cool and Dry Place



AFFF Compound Refills

Bottle / Drum	Applicable for
0.54L	EEF 9s
25L	Various Usage
200L	Various Usage



'L' Wall Bracket

'L' Wall Brackets

Model	WBL-01	WBL-02	WBL-03	WBL-04
Applicable for	2 kg CO ₂ & Dry Powder	3 kg Dry Powder	4 kg - 12 kg Dry Powder	5 kg CO ₂
Material	Chromed Steel			



Front View



Back View

Wire Brackets

Model	WB-02	WB-07
Applicable for	1 L Fire Extinguisher	2L Fire Extinguisher
Body Material	Mild Steel	
Strap Material	Stainless Steel	



Front View



Back View

Compact Plastic Brackets

Model	CPB-01	CPB-02
Applicable for	1 kg Dry Powder	2 kg Dry Powder
Material	Plastic	



Single Type

Double Type

Fire Extinguisher Stands

Model	ESS	ESD
Type	Single	Double
Mild Steel	Body Material	
Dimension (LxWxH)	330mm x 300mm x 725mm	510mm x 300mm x 725mm



Portable Fire Extinguisher Protective Covers

Model	ECV-01P
Applicable for	9 L , 9 kg, 12 kg, 5 kg, 6.8 kg
Dimension (H) x (Ø)	711 mm x 241 mm
Window	85 mm x 135 mm
Material	Waterproof Vinyl
Finishing	Red



Mobile Fire Extinguisher Protective Covers

Model	ECV-01M	ECV-02M	ECV-03M	ECV-04M
Applicable for	25 / 45 / 50 kg or L	75 kg	100 L	135 / 150 L
Dimension (mm)	550 x 800 x 850	590 x 710 x 980	650 x 1000 x 905	650 x 1000 x 1150
Top Window (mm)	150 x 150	100 x 100	150 x 200	150 x 200
Front Window (mm)	100 x 100			
Material	Waterproof Vinyl			
Finishing	Red			



Fire Extinguisher Cabinets

Model	ECP-01M	ECP-02M
Body Material	0.9 mm Mild Steel	1.2 mm Mild Steel
Dimension (W x H x D)	270 mm x 730 mm x 240 mm	
Finishing	RAL 3000 Flame Red Epoxy Polyester Powder Coating	

Our Global Network

EVERSAFE® products are available in more than 45 countries worldwide



EVERSAFE EXTINGUISHER SDN. BHD. (053162-V)

Lot 878, Jalan Subang 9, Taman Perindustrian Subang, 47500 Subang Jaya, Selangor Darul Ehsan, Malaysia.

+603 - 8024 9898 +603 - 8024 7878 / 9623 www.eversafe.net

✉ info@eversafe.net / sales@eversafe.net / export@eversafe.net

www.facebook.com/eversafe.extinguisher